

Washroom Accessories



BUILDING VALUE SINCE 1906

New from Bobrick...



SureFlo™
Designer Finishes
Automatic Liquid and
Foam Soap Dispensers

Page 6



Manual Counter-Mounted
Foam Soap Dispenser

Page 7



Corner and Pedal
Waste Bins

Pages 18, 19



Surface-Mounted
Warm Air Hand Dryers

Page 20



Bright Polished Cubicle
Collection

Pages 26, 27, 35, 37

Bobrick.co.uk
Bobrick.la
Bobrick.de
Bobrick.com

Please visit us online:

Bobrick.co.uk English

- Technical data sheets
- Specification text
- CAD files
- Installation instructions

Bobrick.de German

- Technical data sheets
- Specification text
- CAD files
- Installation instructions

Bobrick.la Spanish

- Technical data sheets
- Specification text
- CAD files
- Installation instructions

For additional information:

Bobrick.com: English (US)

- BIM files
- Product videos

Washroom Accessories

Soap Dispensers	6-9
Combination Towel and Waste	10-13
Paper Towel Dispensers	14-16
Waste Bins	17-19
Warm Air Hand Dryers.....	20-21
Mirrors	22-23

Child Care Products

Baby Changing Stations.....	24-25
Child Protection Seats	25

Toilet Compartment Accessories

Toilet Tissue Dispensers	26-29
Sanitary Bins	30-31
Grab Bars and Shower Seats	32-33
Toilet Seat Cover Dispensers	34

Bathroom Accessories

Medicine Cabinets	35
Hooks	35-36
Toilet Brush Holder	37
Shelves and Towel Bars.....	37-38
Soap Dishes.....	38
Shower Accessories	38

Note: All dimensions listed are in millimeters (mm), unless otherwise noted.

Numerical Product Index

Model No.	Page No.	B-272	28	B-35903	14	B-4112	8	B-670	36	B-715E	21
B-1556 Series.....	23	B-2721	28	B-3644	17	B-4221	34	B-6707	36	B-7180	20
B-165 Series.....	22	B-273	28	367-60	13	B-4262	14	B-671	35	B-7188	20
B-1656 Series.....	23	B-2730	28	368-60	13	B-4288	27	B-6717	35	B-72974	16
B-1658 Series.....	23	B-27313	27	B-369	13	B-4353	30	B-672	36	B-750	21
B-1659 Series.....	23	B-274	28	369-130... 12,13,14,15		B-4354	30	B-6727	36	B-7671	35
B-166 Series.....	22	B-2740	28	B-36903	12	B-43644	17	B-673	37	B-76717	35
B-2012	9	B-275	18	B-3699	13	B-4369	11	B-6737	37	B-7672	36
B-2013	9	B-277	17	B-3803	11	B-43699	11	B-674	37	B-76727	36
204-1	38	B-279	18	3803-130	11, 15	B-4388	27	B-6747	37	B-7685	29
204-2	38	B-2860	16	B-38030	10	B-43944	11	B-676	38	B-76857	29
204-3	38	B-287	37	B-38032	11	B-43949	11	B-677	36	B-7686	29
B-207	38	B-2888	27	B-38033	11	B-4998	33	B-6777	36	B-76867	29
B-211	36	B-2890	28	B-38034	11	B-4998.99	33	B-680	38	B-770	20
B-2111	9	B-2892	29	B-380349	11	B-5181	33	B-6806	32	B-778	20
B-2112	9	B-290 Series.....	22	B-386	28	B-5191	33	B-6806.99	32	815969.....	11
B-2116	36	B-2906 Series.....	23	B-3888	28	B-526	14	B-6807	38	818615.....	8
B-212	36	B-2908 Series.....	23	B-39003	12	B-527	17	B-68137	32	B-822 Series.....	7
B-220816.....	19	B-2909 Series.....	23	39003-130	12, 15	B-529	17	B-68137.99	32	B-823 Series.....	7
B-221	34	B-292 Series.....	22	B-3942	12	B-532	17	B-682	35	B-824	6
B-221216	19	B-293 Series.....	23	B-3944	12	B-541	26	B-6827	35	B-828	6
B-2250	19	B-294 Series.....	23	3944-130.....	12, 15	B-5416	26	B-683	38	B-8601	9
B-2260	19	B-297	35	3944-134.....	12, 13, 18	B-542	26, 35	B-685	29	B-922	7
B-2280	19	B-2974	16	3944-52	13	B-5426	26, 35	B-6857	29	B-922-45	7
B-2300	19	B-29744	16	B-3947	12	B-543	26	B-686	29	KB101-00-INB	25
B-233	36	B-299	35	B-3949	12	B-5436	26	B-68616	32	KB102-00-INB.....	25
B-2400	19	B-3013	34	B-3961	13	B-544	26, 37	B-68616.99	32	KB110-SSRE-INB	24
B-254	31	B-306	8	3961-50	13	B-5446	26, 37	B-6867	29	KB110-SSWM-INB..	24
B-262	15	B-318	14	B-39617	13	B-545	26, 37	B-687	37	KB111-SSRE-INB	24
262-130	15	B-3474	34	B-39619	13	B-5456	26, 37	B-699	29	KB111-SSWM-INB..	24
B-2621	15	B-353	31	B-397	35	B-5806	32, 33	B-6997	29	KB200-00	25
B-26607	8	B-35303	30	B-3974	12	B-5806.99	33	B-6999	29	KB200-00-INB	25
B-26617	8	B-354	31	3974-150.....	13	B-5816	33	B-69997	29	KB200-01SS	24
B-26627	8	B-3541	31	3974-55	12, 16	B-5816.99	33	B-710	21	KB200-01SS-INB	24
B-26637	8	B-357	34	B-39747	12	B-6047	38	B-710E	21	KB208-01	25
B-268	18	B-3574	34	B-3979	12	B-6107	38	B-7120	21	KB208-01-INB.....	25
B-270	30	B-3579	34	B-398	35	B-6699	28	B-7128	21		
		B-359	15	B-4063	8	B-66997	28	B-715	21		

Three Design-Integrated Collections



ConturaSeries™

ConturaSeries sets the bar for design innovation and quality. ConturaSeries towel dispensers feature the TowelMate™ paper saving system. TowelMate limits paper delivery to one towel at a time, eliminating towel bunching and waste. Saves 20% or more in paper towels used preserving the environment and lowering operating costs.

ConturaSeries waste bins include LinerMate™ bag holders. LinerMate provides a neat, flush appearance with no unsightly bag overhang.

ConturaSeries is manufactured with satin-finish type 304 stainless steel.



Seamless monoform draws, flush locks, precise fit and finish



TrimLineSeries™

TrimLineSeries features a contemporary minimalist design and recessed mounting, manufactured with satin-finish type 304 stainless steel. The low-profile TrimLineSeries warm air hand dryer visually complements the Series and supports inclusive design for accessibility compliance.

TrimLineSeries features 90° angles on all exterior and interior corners and openings. Flanges are concealed for additional design simplicity.



Flush-mounted, rectangular doors and openings



ClassicSeries™

A seamless flange is the visual trademark of the ClassicSeries, the traditional standard for our most comprehensive selection of non-residential washroom accessories. Newest amongst them is our automatic roll towel dispensers, available in surface-mounted, semi-recessed and modular towel/waste combination units.

ClassicSeries accessories feature satin-finish type 304 stainless steel throughout, whilst being engineered for the economic demands of price-sensitive projects.



Classic bevelled flanges, hemmed edges, piano hinges



Architects, developers and facility managers have selected Bobrick's performance-engineered washroom accessories with confidence for more than a century. As the market leader, we deliver building owner value through design excellence, compliance, sustainability and economical cost-in-use.



Robust engineering and built-in maintainability are the standards for our products, providing long-lasting functionality. Reduced repair and replacement costs also deliver a positive impact on the operating budget.



Bobrick is at the forefront of the touch-free commercial restroom with automatic models to limit cross contamination. Our stainless products are easy to maintain and sanitize through regular cleaning. Microban™ Antimicrobial protection is a Koala™ baby changing station exclusive.



Accessories fabricated of 50%–70% post-industrial stainless steel contribute toward LEED certification. Soap and towel dispensers are engineered to reduce consumables usage eliminating the need for proprietary towels and soap cartridges, thereby reducing the operating footprint of a given building.



Cost-in-use savings are also trademarks of Bobrick washroom accessories. Products are designed to control soap and paper towel usage, reduce labour and maintenance expenses and to be vandal-resistant.



Our products are engineered to meet the latest accessibility requirements including wall protrusion, mounting heights, reach ranges and operation. Bobrick also provides detailed consultation on compliant product selection and installation. Bobrick/Koala meet ADA-ABA, ICC/ANSI, ASTM, EN.



Three design-integrated series of accessories include ConturaSeries for prestige properties, TrimLineSeries for up-scale buildings and ClassicSeries for standard use and heavy traffic projects. From Class A to education and healthcare, recessed and surface-mounted, we have your design.



Non-proprietary dispensing of universal paper towels and bulk soap help building owners escape the high prices of consumable contracts common to closed system products. This facilitates open-market procurement and the ability to take advantage of a large variety of soap and towel options.



Improved



B-824

SureFlo Automatic Counter-Mounted Soap Dispenser

More robust construction and easier installation ensure longer life for greater savings. Top-filling, counter-mounted, sensor-activated soap dispensers. Chrome finish for design continuity. Use of non-proprietary bulk liquid soaps for significant cost-in-use savings. Post-consumer waste reduction by 57% versus cartridges contributes to sustainability.

B-828 Similar to B-824, but dispenses foam soap.

New

SureFlo Designer Finishes

All the great features of our standard models, with the added durability of die-cast zinc body construction. The advanced design, available in a variety of finishes, also includes a low-soap indicator to alert maintenance personnel when to service the unit.

Bright LEDs at the dispenser tip display status: Green for Ready, Yellow for Low Soap, Red for Maintenance Required.

Available finishes include Polished Nickel, Brushed (satin) Nickel, Chrome, Oil-Rubbed Bronze and Bright Polished Brass.



Hygiene: Fibre optic touch-free activation reduces cross-contamination.



Design: Polished or satin finish for design continuity with other washroom fixtures.



Economical: Top filling saves labour; oversize fill port designed for economical bulk soap.



Sustainable: Foam and liquid bulk soaps save more than 80% compared to cartridges.



New



B-823 Series
Manual Foam
Counter-Mounted Soap Dispensers

Top-filling, counter-mounted foaming soap dispensers for ease of maintenance and labour savings. Vandal-resistant locking cover and spout. Corrosion resistant. Bright-polished spout, cover and escutcheon. High-impact-resistant ABS body and shank. Shatter-resistant polyethylene container.

	B-823	B-8231
Capacity (litres)	1.0	0.6
Spout Length	100	100
Maximum Mounting Thickness	100	100

	B-8236	B-82316
Capacity (litres)	1.0	0.6
Spout Length	150	150
Maximum Mounting Thickness	100	100



B-822 Series
Manual Liquid
Counter-Mounted Soap Dispensers

Top-filling, counter-mounted soap dispensers for ease of maintenance and labour savings. Vandal-resistant locking cover and free-turning spout. Corrosion-resistant. Bright-polished spout, cover and escutcheon. High-impact-resistant ABS body and shank. Shatter-resistant polyethylene container.

	B-822	B-8221
Capacity (litres)	1.0	0.6
Spout Length	100	100
Maximum Mounting Thickness	100	25

	B-8226	B-82216
Capacity (litres)	1.0	0.6
Spout Length	150	150
Maximum Mounting Thickness	100	25



B-922
Manual Liquid
Counter-Mounted Reservoir Soap Dispenser

Under-Counter Reservoir Soap System with 914mm long supply tube which can be cut-to-size in the field. Equipped with 254mm long, translucent plastic elbow for visible soap level and 838mm flexible connector hose which can be cut-to-size in the field. Specify one unit for each basin; each providing 3.4L soap capacity, plus capacity of pipe connections.

	B-922	B-9226
Spout Length	100	150

B-922-45 ABS End Cap (set of 2 caps).

Note: Bobrick stainless steel soap dispensers (except B-2012) are not designed to dispense alcohol-based hand sanitisers or iodine-based surgical soaps. To help prevent corrosion and extend the service life of B-2111, B-2112, and B-4112 soap dispensers, liquid soaps should be chloride free and pH-neutral.



B-4112
ConturaSeries
Surface-Mounted Soap Dispenser

Corrosion-resistant valve dispenses commercially marketed all-purpose hand soaps. Container is satin-finish stainless steel. Capacity: 1.2L. Soap refill window. Concealed wall fastening. Hinged filler-top requires special key to open. Vandal resistant.

818615 Similar to B-4112, but made with type 316 stainless steel.

Width	178
Height	156
Depth Wall to Push-button	84
Accessibility Mounting Height	1245



B-4063
ConturaSeries
Recessed Soap Dispenser

Corrosion-resistant valve dispenses commercially marketed all-purpose hand soaps. Front of dispenser drawn, satin-finish stainless steel with covered, plastic soap vessel attached to back. Capacity: 1.5L. Soap refill window. Pulls out for filling and maintenance. Concealed locking device. Vandal resistant.

	Unit	Wall Opening
Width	185	149
Height	162	140
Recess	98	102
Projection Wall to Push-button	41	N/A
Accessibility Mounting Height	1245	1230



B-26607
TrimLineSeries
Surface-Mounted Liquid Soap Dispenser

Satin-finish stainless steel. Accepts liquid soap cartridges or bulk-fill soaps. Push activated with less than 22.2N. Capacity: 500ml. Concealed wall fastening. Hinged housing with key lock and soap refill window. Vandal resistant.

B-26617 Similar to B-26607, but with 1L capacity.

	B-26607	B-26617
Width	96	96
Height	298	337
Projection	153	153
Capacity (litres)	0.5	1
Accessibility Mounting Height	1380	1420

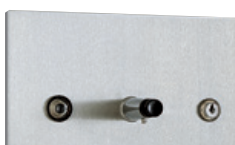


B-26627
TrimLineSeries
Surface-Mounted Foam Soap Dispenser

Satin-finish stainless steel. Accepts foaming soap cartridges or bulk-fill foaming soaps. Push activated with less than 22.2N. Capacity: 500ml. Concealed wall fastening. Hinged housing with key lock and soap refill window. Vandal resistant.

B-26637 Similar to B-26627, but with 1L capacity.

	B-26627	B-26637
Width	96	96
Height	298	337
Projection	153	153
Capacity (litres)	0.5	1
Accessibility Mounting Height	1380	1420



B-306
TrimLineSeries
Recessed Soap Dispenser

Satin-finish stainless steel. Door has 90° return, conceals flange. Enclosed plastic soap vessel on back of door. Swings open for easy filling. Full-length hinge and key lock secure door to cabinet. Capacity: 1.3L. Corrosion-resistant valve dispenses commercially marketed all-purpose hand soaps. Soap refill window.

	Unit	Wall Opening
Width	241	213
Height	140	111
Recess	97	98
Projection Wall to Push-button	76	N/A
Accessibility Mounting Height	1215	1195



B-2012
Automatic Wall-Mounted Soap Dispenser

No-touch sensor-activation promotes hygiene and convenience. Satin-finish stainless steel is durable and coordinates with other Bobrick accessories. Bulk-fill 850ml reservoir provides significant savings compared to proprietary cartridges. Dispenses hand sensitizers and surgical soaps. Easily installs almost anywhere with screws or double-sided adhesive (provided).

Width	108
Height	242
Depth	107

B-2013 Similar to B-2012, but dispenses foam.

Improved



B-8601
Panel-Mounted Soap Dispenser

Heavier pump spring provides longer-lasting durability. Corrosion-resistant valve mounts into 18mm diameter hole through 32 to 51mm thick panel; projects 83mm. Dispenses liquid and lotion soaps, and synthetic detergents. Translucent, shatter-resistant polyethylene container mounts on opposite side of panel and feeds soap valve through supply tube. Capacity: 1.0L.



B-2111
ClassicSeries
Surface-Mounted Soap Dispenser

Vertical tank is satin-finish stainless steel. Corrosion-resistant valve dispenses commercially marketed all-purpose hand soaps. Capacity: 1.2L. Soap refill window. Concealed wall fastening. Hinged filler-top requires special key to open. Vandal resistant.

Width	121
Height	206
Depth Wall to Push-button	89
Accessibility Mounting Height	1290



B-2112
ClassicSeries
Surface-Mounted Soap Dispenser

Horizontal tank is satin-finish stainless steel. Corrosion-resistant valve dispenses commercially marketed all-purpose hand soaps. Capacity: 1.2L. Soap refill window. Concealed wall fastening. Hinged filler-top requires special key to open. Vandal resistant.

Width	206
Height	121
Depth Wall to Push-button	89
Accessibility Mounting Height	1205





B-38030
TrimLineSeries
3IN1 Combination Unit

Flush TrimLine design, space-saving 100 mm cabinet depth, and satin-finish stainless steel doors compliment any washroom from Class-A offices to fine restaurants.

Dispenses 600 multi-fold or 450 C-fold paper towels. Built-in TowelMate. Leak-proof waste bin has 13.7L capacity. Hand dryer: 208-240V AC, 4 Amp, 900 Watts, 50/60 Hz Single Phase, VDE approved, CE marked, AS/NZS 60335.2.23:2004 compliant.

Reduces towel usage, energy use and waste while providing a fast, comfortable hand dry.

- **Economical:** Patented TowelMate dispenses a single towel at a time eliminating bunching, reducing usage by up to 20%.



- **Sustainable:** Patrons reduce consumption and waste by combining a 900-watt high-performance dual-air hand dryer and a single paper towel.



- **Compliant:** Paper dispenser, air outlets and waste disposal meet reach range requirements for Australian DDA, UK Doc M, US ADA and similar standards.



- **Durable:** Robust type 304 stainless steel, flush tumbler locks and full-length piano hinges provide long life, vandal resistance and easy maintenance.



	Unit	Wall Opening
Width	396	347
Height	1448	1398
Recess	100	102



B-43944
ConturaSeries
Recessed Paper Towel
Dispenser/Waste Bin with
TowelMate and LinerMate

Satin-finish stainless steel. Flush tumbler lock. Dispenses 600 C-fold or 800 multifold towels. Waste bin has 53.8L capacity. Removable front panel for easy cleaning. Includes TowelMate and LinerMate accessories.

B-43949 Similar to B-43944, but with stainless steel skirt for surface mounting.

	Unit		Wall Opening
	B-43944	B-43949	B-43944
Width	443	446	406
Height	1429	1432	1391
Recess	100	N/A	102
Projection	130	232	N/A
Accessibility Mounting Height	1555	1555	1530



B-4369
ConturaSeries
Recessed Paper Towel
Dispenser/Waste Bin with
TowelMate and LinerMate

Satin-finish stainless steel. Flush tumbler lock. Dispenses 350 C-fold or 475 multifold towels. Waste bin has 9.8L capacity. Removable front panel for easy cleaning. Includes TowelMate and LinerMate accessories.

B-43699 Similar to B-4369, but with stainless steel skirt for surface mounting.

	Unit		Wall Opening
	B-4369	B-43699	B-4369
Width	324	327	298
Height	711	714	676
Recess	100	N/A	102
Projection	64	168	N/A
Accessibility Mounting Height	1340	1340	1315



B-3803
TrimLineSeries
Recessed Paper Towel
Dispenser/Waste Bin

Satin-finish stainless steel. Door has 90° return, conceals flange. Dispenses 600 C-fold, 800 multifold or 1100 single-fold towels. Removable, leak-proof, 23.8L waste container.

B-38032 Similar to B-3803, but with 51mm stainless steel skirt for semi-recessing.

B-38034 Similar to B-3803, but only dispenses C-fold and multifold towels. Waste capacity: 14.4L.

B-380349 Similar to B-38034, but with stainless steel skirt for surface mounting.

3803-130 Optional TowelMate Paper Towel Dispenser Accessory for dispensing a single towel with each pull.

	Unit		Wall Opening	
	B-3803	B-38034	B-3803	B-38034
Width	330	330	292	292
Height	1400	1400	1362	1362
Recess	143	92	146	95
Projection	14	14	N/A	N/A
Accessibility Mounting Height	1545	1545	1520	1520



B-38033
TrimLineSeries
Recessed Paper Towel
Dispenser/Automatic Hand Dryer/
Waste Bin

Satin-finish stainless steel. Door has 90° return, conceals flange. Dispenses 450 C-fold, 600 multifold or 850 single-fold towels. Removable leak-proof, 12.5L waste container. Hand dryer: 220-240V AC, 7 Amp, 1500-1700 Watts, 50/60 Hz, Single Phase, VDE approved and CE marked.

815969 Similar to B-38033, but unit is narrower and taller.

	Unit		Wall Opening	
	B-38033	815969	B-38033	815969
Width	384	330	349	292
Height	1416	1829	1381	1794
Recess	143	143	146	146
Projection	14	14	N/A	N/A
Accessibility Mounting Height	1545	1740	1520	1740

B-39003
TrimLineSeries
Recessed Paper Towel
Dispenser/Waste Bin



Satin-finish stainless steel. Door has 90° return, conceals flange. Dispenses 600 C-fold, 800 multifold or 1100 single-fold towels. Removable, leak-proof, 45.4L waste container.

39003-130 Optional TowelMate Paper Towel Dispenser Accessory for dispensing a single towel with each pull.

	Unit	Wall Opening
Width	437	406
Height	1422	1391
Recess	194	200
Projection	14	N/A
Accessibility Mounting Height	1535	1510

B-36903
TrimLineSeries
Recessed Paper Towel
Dispenser/Waste Bin



Satin-finish stainless steel. Door has 90° return, conceals flange. Dispenses 300 C-fold or 400 multifold towels. Removable, leak-proof, 6.1L waste container. Cabinet does not lock.

369-130 Optional TowelMate Paper Towel Dispenser Accessory for dispensing a single towel with each pull.

	Unit	Wall Opening
Width	330	292
Height	791	749
Recess	92	95
Projection	14	N/A
Accessibility Mounting Height	1295	1270

B-369
ClassicSeries
Recessed Paper Towel
Dispenser/Waste Bin



Satin-finish stainless steel. Seamless, bevelled flange. Dispenses 350 C-fold or 475 multifold towels. Knob-latch retains door. Removable waste bin has 7.6L capacity.

B-3699 Similar to B369, but with 100mm stainless steel skirt for surface mounting.

369-130 Optional TowelMate Paper Towel Dispenser Accessory for dispensing single towel with each pull.

	Unit		Wall Opening
	B-369	B-3699	B-369
Width	356	362	321
Height	711	711	676
Recess	100	N/A	102
Projection	5	108	N/A
Accessibility Mounting Height	1310	1310	1285

Improved **B-3974**
ClassicSeries
Recessed Convertible Automatic
Roll Towel Dispenser/Waste Bin



Improved activation and delivery system are more user-friendly. Sensor-operated towel dispenser accepts non-proprietary roll paper towels 203mm diameter, 203mm wide, 244m long with 38 to 51mm diameter standard core. Accommodates stub roll up to 89mm diameter with automatic transfer. Battery or AC powered. Removable 45.4L waste bin is locked into cabinet.

B-3979 Similar to B-3974, but with 100mm skirt for surface mounting.

B-39747 Similar to B-3974, but with 68.1L waste bin.

3944-134 Optional LinerMate Paper Towel Dispenser Accessory for managing disposable bin liners.

3974-55 External AC Adapter (6V) available for B-3974, B-3979, B-39747.

	Unit			Wall Opening	
	B-3974	B-3979	B-39747	B-3974	B-39747
Width	437	445	437	406	406
Height	1422	1430	1422	1391	1391
Recess	100	N/A	100	102	102
Projection	130	235	206	N/A	N/A
Accessibility Mount. Ht.	1460	1485	1460	1435	1435

Convertible Towel Dispenser Modules Provide Flexibility for Changing Needs for B-3944, B-3961 and B-3974 Series.



Convertible series cabinets allow facility managers to change between folded, mechanical roll and automatic roll paper towel dispensers. Waste bin capacity can also be adjusted in the field without changing the cabinet. Modules below can be interchanged in B-3974, B-3944, B-3961 and their alternate models. Modules can also be used in many other manufacturers' similar cabinets.

- 3944-52** Folded Towel Dispenser Module
- 3961-50** Touch-Free, Pull Towel Dispenser Module
- 3974-150** Automatic Dispenser Module **Improved**
- 367-60** 45.4L Waste Bin Module
- 368-60** 68.1L Waste Bin Module

B-3944 ClassicSeries Recessed Convertible Paper Towel Dispenser/Waste Bin



Unit includes folded paper towel module and 45.4L waste bin module which can be interchanged with an automatic or touch-free roll towel module and 68.1L waste bin module. Seamless, bevelled flange. Dispenses 600 C-fold or 800 multifold towels. Removable waste bin is locked into cabinet.

B-3942 Similar to B-3944, but with a 51 mm skirt for semi-recessed mounting.

B-3947 Similar to B-3944, but with 68.1L waste bin.

B-3949 Similar to B-3944, but with 100mm skirt for surface mounting.

3944-130 Optional TowelMate Paper Towel Dispenser Accessory for dispensing single towel with each pull.

3944-134 Optional LinerMate Paper Towel Dispenser Accessory for managing disposable bin liners.

	Unit			Wall Opening		
	B-3944	B-3942	B-3947	B-3949	B-3944 B-3947	B-3942
Width	437	443	447	443	406	406
Height	1422	1429	1422	1429	1391	1391
Recess	100	50	100	N/A	102	51
Projection	105	158	208	208	N/A	N/A
Accessibility Mount. Ht.	1510	1510	1510	1510	1510	1510

B-3961 ClassicSeries Recessed Convertible Paper Towel Dispenser/Waste Bin



Unit includes touch-free roll towel module and 45.4L waste bin module which can be interchanged with an automatic or folded towel module and 68.1L waste bin module. Seamless, bevelled flange. Mechanism dispenses 305mm length per pull of non-proprietary roll paper towels. Accommodates 203mm wide, up to 203mm diameter rolls, 244m long. Removable waste bin is locked into cabinet.

B-39617 Similar to B-3961, but with 68.1L waste bin.

B-39619 Similar to B-3961, but with 100mm stainless steel skirt for surface mounting.

3944-134 Optional TowelMate Paper Towel Dispenser Accessory for managing disposable bin liners.

	Unit			Wall Opening		
	B-3961	B-39617	B-39619	B-3961	B-39617	B-39619
Width	437	437	445	406	406	406
Height	1422	1422	1430	1391	1391	1391
Recess	100	100	N/A	102	102	102
Projection	130	206	210	N/A	N/A	N/A
Accessibility Mounting Height	1400	1400	1430	1375	1375	1375



B-4262
ConturaSeries
Surface-Mounted Paper Towel Dispenser
with TowelMate

Satin-finish stainless steel. Top of cabinet equipped with key lock. Door swings down for loading towels. Dispenses 400 C-fold or 525 multifold towels. Cabinet slots indicate refill time. Includes built-in TowelMate.

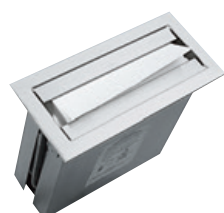
Width	275
Height	343
Depth	124
Accessibility Mounting Height	1320



B-318
TrimLineSeries
Concealed Paper Towel Dispenser

Satin-finish stainless steel. Dispenses 600 C-fold or 800 multifold towels. Towels load into bottom of cabinet concealed behind wall or mirror; only the towel tray is visible.

	Unit	Wall Opening
Width	291	305
Height	457	617
Recess	109	114
Accessibility Mounting Height	1440	1440



B-526
TrimLineSeries
Countertop-Mounted Recessed Paper Towel Dispenser

Satin-finish stainless steel. Flange has 90° return. Towels load into top of dispenser. Dispenses 300 C-fold or multifold towels. Housing below countertop to conceal dispenser is not included.

	Unit	Countertop Opening
Width	324	311
Height	152	114
Recess	281	432
Projection	6	N/A



B-35903
TrimLineSeries
Recessed Paper Towel Dispenser

Satin-finish stainless steel. Door has 90° return, conceals flange. Dispenses 300 C-fold or 400 multifold towels. Cabinet does not lock.

369-130 Optional TowelMate Paper Towel Dispenser Accessory for dispensing single towel with each pull.

	Unit	Wall Opening
Width	330	292
Height	481	438
Recess	92	95
Projection	14	N/A
Accessibility Mounting Height	1320	1295



B-262
ClassicSeries
Surface-Mounted Paper Towel Dispenser

Satin-finish stainless steel. Hemmed towel tray opening. Dispenses 400 C-fold or 525 multifold towels. Door has key lock and piano-hinge. Cabinet slots indicate refill time.

262-130 Optional TowelMate Paper Towel Dispenser Accessory for dispensing single towel with each pull.

Width	273
Height	356
Depth	100
Accessibility Mounting Height	1370



B-2621
ClassicSeries
Surface-Mounted Paper Towel Dispenser

Satin-finish stainless steel. Dispenses 200 C-fold or 275 multifold towels. Door has knob-latch.

262-130 Optional TowelMate Paper Towel Dispenser Accessory for dispensing single towel with each pull.

Width	273
Height	181
Depth	100
Accessibility Mounting Height	1195

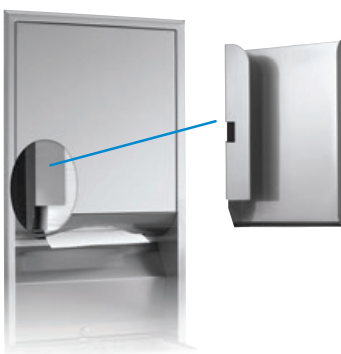


B-359
ClassicSeries
Recessed Paper Towel Dispenser

Satin-finish stainless steel. Seamless, bevelled flange. Dispenses 350 C-fold or 475 multifold towels. Door equipped with full-length stainless steel piano-hinge at bottom; swings down for easy filling.

369-130 Optional TowelMate Paper Towel Dispenser Accessory for dispensing single towel with each pull.

	Unit	Wall Opening
Width	324	286
Height	437	397
Recess	102	102
Projection	5	N/A
Accessibility Mounting Height	1320	1295



TowelMate Reduces Towel Usage Up to 20% by Dispensing One Towel at a Time.

Eliminates the dispensing of handfuls of towels with the "Perfect Pull Rod" separating and dispensing individual C- or multifold towels. Patented TowelMate accessory installs in existing cabinets without tools and fits all Bobrick dispensers and similar models of other manufacturers.

Part No.	Models
3803-130	B-3803
39003-130	B-39003, B-390034, B-396034
369-130	B-359, B-35903, B-369, B-36903, B-3699
3944-130	B-359039, B-38032, B-38034, B-380349, B-3942, B-3944, B-3947, B-3949
262-130	B-262, B-2620, B-2621, B-26212



Improved



B-2974 **Automatic Surface-Mounted** **Roll Towel Dispenser**

Improved activation and delivery system are more user friendly. Satin-finish stainless steel. Accepts non-proprietary roll paper towels 203mm diameter, 203mm wide, 244m long with 38 to 51mm diameter standard core. Automatic transfer of stub roll up to 89mm diameter. Door has key lock and piano-hinge. Battery requirements: 4 Alkaline D Cells (not included).

3974-55 External AC Adapter (6V) available.

Width	386
Height	464
Depth	230
Accessibility Mounting Height	1525

Improved



B-29744 **Automatic Semi-Recessed** **Roll Towel Dispenser**

Improved activation and delivery system are more user friendly. Similar to B-2974 with seamless satin-finish stainless steel bevelled flange. Accepts non-proprietary roll paper towels 203mm diameter, 203mm wide, 244m long with 38 to 51mm diameter standard core. Automatic transfer of stub roll up to 89mm diameter. Battery requirements: 4 Alkaline D Cells (not included).

3974-55 External AC Adapter (6V) available.

	Unit	Wall Opening
Width	437	406
Height	514	479
Recess	100	102
Projection	130	N/A
Accessibility Mounting Height	1530	1510



B-72974 **Automatic Surface-Mounted** **Roll Towel Dispenser**

Durable plastic construction; translucent navy cover. Locking cabinet. Accepts non-proprietary roll paper towels 203mm diameter, 203mm wide, 244m long with 38 to 51mm diameter standard core. Automatic transfer of stub roll up to 89mm diameter. Battery requirements: 4 Alkaline D Cells (not included).

3974-55 External AC Adapter (6V) available.

Width	325
Height	385
Depth	240
Accessibility Mounting Height	1295



B-2860 **Surface-Mounted Roll** **Paper Towel Dispenser**

Satin-finish stainless steel. Touch-free pull-towel mechanism dispenses 305mm length of non-proprietary roll paper towels. Accommodates rolls 203mm wide, up to 203mm diameter, 244m long. Automatic transfer of stub roll up to 89mm diameter. Pull force to operate: 8.0N. Door has key lock and piano-hinge.

Width	297
Height	381
Depth	227
Accessibility Mounting Height	1525



B-277
ConturaSeries
Surface-Mounted Waste Bin with LinerMate

Satin-finish stainless steel. Top edges are hemmed and bottom of waste bin has recessed finger grip for safe handling. Includes LinerMate Bin Liner Retainer Accessory for managing disposable bin liners. Capacity: 48.3L.

Width	384
Height	584
Depth	216



B-43644
ConturaSeries
Recessed Waste Bin with LinerMate

Satin-finish stainless steel. Removable front panel for easy cleaning. Includes LinerMate Bin Liner Retainer Accessory for managing disposable bin liners. Capacity: 48.3L.

	Unit	Wall Opening
Width	438	403
Height	705	667
Recess	98	102
Projection	129	N/A



B-527
TrimLineSeries
Recessed Countertop Waste-Disposal Door

Satin-finish stainless steel. Door is self-closing. Flange has 90° return. Waste bin and housing below counter to conceal bin are not included.

	Unit	Countertop Opening
Width	324	286
Height	152	115
Recess	52	115
Projection	6	N/A



B-532
TrimLineSeries
Circular Waste Chute

Satin-finish stainless steel. Flat flange suitable for counter, recessed, or under-counter installation. Provides access to under-counter waste bin (not included).

B-529 Circular Waste Chute Bright-polished stainless steel. Rolled flange. Provides access to under-counter waste bin (not included).

	Unit		Countertop Opening	
	B-532	B-529	B-532	B-529
Outer Dia.	173	176	N/A	N/A
Inner Dia.	151	140	153	143
Recess	98	116	N/A	N/A
Projection	0.8	11	N/A	N/A



B-3644
ClassicSeries
Recessed Waste Bin

Satin-finish stainless steel. Seamless, bevelled flange. Removable 45.4L bin locks into cabinet. Hooks hold optional vinyl liner.

3944-134 Optional LinerMate Bin Liner Retainer Accessory for managing disposable bin liners.

	Unit	Wall Opening
Width	437	406
Height	778	743
Recess	100	102
Projection	105	N/A



B-275
ClassicSeries
Surface-Mounted Waste Bin

Satin-finish stainless steel. Bottom edges hemmed for maximum safety. Hooks hold furnished reusable vinyl liner; removable for servicing. Capacity: 75.7L.

Width	419
Height	584
Depth	318



B-279
ClassicSeries
Surface-Mounted Waste Bin

Satin-finish stainless steel. Bottom edges hemmed for maximum safety. Hooks hold furnished reusable vinyl liner; removable for servicing. Capacity: 24.2L.

	B-279
Width	356
Height	457
Depth	153

New



B-268
ClassicSeries
Surface-Mounted Corner Waste Bin

Ideal for installation near exits where patrons use paper towels to assist door opening. Satin-finish stainless steel. Top and bottom edges hemmed for safety. Hooks hold furnished reusable vinyl liner. Capacity: 49.2L.

Width	521
Height	584
Depth	321

New



B-220816
Pedal Operated Waste Bin

Heavy-duty, floor-standing, foot operated, hygienically designed with self-closing lid. Capacity: 30.3L.

B-221216 Similar to B-220816, but with 45.4L capacity.

	B-220816	B-221216
Width	288	335
Height	533	597
Depth	321	356



B-2250
ClassicSeries
Floor-Standing Waste Bin with Top

Satin-finish stainless steel. Top has self-closing doors. Vinyl wall bumper, rubber feet. Hooks for liners. Capacity: 49.2L.

Width	340
Height	749
Depth	340



B-2280
ClassicSeries
Floor-Standing Open-Top Waste Bin

Satin-finish stainless steel. Open top. Vinyl wall bumper, rubber feet. Hooks for liners. Capacity: 79.5L.

B-2260 Similar to B-2280, but with 49.2L capacity.

	B-2280	B-2260
Width	356	353
Height	762	559
Depth	356	353



B-2300
Floor-Standing Dome Top Waste Bin

Satin-finish stainless steel body with black steel-domed top. Removable top with fingerprint-resistant, textured powder coated finish has 152mm diameter opening for hygienic, no-touch disposal of waste. Galvanised steel liner has grommets lift holes. Capacity: 68.1L.

Diameter	381
Height	787



B-2400
Floor-Standing Large Capacity Waste Bin

Satin-finish stainless steel. Removable funnel top with 210mm diameter opening for hygienic, no-touch disposal of waste. Four heavy-duty rubber feet. Galvanised steel waste container has handle for easy removal. Capacity: 125L.

Diameter	464
Height	813



New



B-7188 **TerraDry™** **Surface-Mounted Hand Dryer**

Bright-polished chrome die-cast aluminium cover. 17 second dry time at a mere 70 dBA. Slim 100mm depth is compliant with accessibility standards. **115V AC**, 8.5 Amp, 50/60 Hz, 1000 Watts, Single Phase, cULus Listed. **208-240V AC**, 4.0-4.4 Amp, 50/60 Hz, 1000 Watts, Single Phase, cULus Listed and CE marked.

B-7180 Similar to B-7188, but with white gloss cover.

Width	258
Height	350
Depth	100

Improved



B-778 **DuraDry™** **Surface-Mounted Hand Dryer**

Sleeker styling enhances washroom aesthetics. Bright-polished, chrome-plated cast aluminium cover. High-velocity output delivers 15 second dry time at a mere 72dBA. **115V AC**, 12 Amp, 50/60 Hz, 1380 Watts, Single Phase, cULus Listed. **208-240V AC**, 5.5-6.3 Amp, 50/60 Hz, 1380 Watts, Single Phase, cULus Listed and CE marked.

B-770 Similar to B-778 but with white epoxy cover.

Width	266
Height	308
Depth	187



B-7128
TrimDry™
Surface-Mounted Hand Dryer

Durable, 0.9mm (22-gauge), type 304 satin-finish stainless steel cover with black plastic trim, 17 second hand dry time at 71 dBA. **115V AC**, 15 Amp, 1725 Watts, 50/60 Hz. All Models cULus Listed. **208-240V AC**, 6.8-7.8 Amp, 1400-1900 Watts, 50/60 Hz. All models cULus Listed, VDE approved and CE marked.

Width	350
Height	345
Depth	100

B-7120 Similar to B-7128, but with durable, 0.8mm (22-gauge), zinc-plated steel with white epoxy cover.



B-715 / B-715E
Elan™
Surface-Mounted Hand Dryer

Contemporary styling, satin-finish type 304 stainless steel cover. Automatic hand sensor. **115V AC**, 15 Amp, 1725 Watts, 60 Hz. cULus Listed. **220-240V AC**, 7 Amp, 1500-1700 Watts, 50/60 Hz. VDE approved, CE marked.

Width	295
Height	279
Depth	141



B-750
Aircraft™
Recessed Hand Dryer

Cast iron with white vitreous-enamel cover. Two-position nozzle for hand or face drying. Automatic hand sensor. **115V AC**, 20 Amp, 2300 Watts, 50/60 Hz. All Models cULus Listed. **208-240V AC**, 9-10 Amp, 1900-2400 Watts, 50/60 Hz. All models cULus Listed, VDE approved, CE marked.

	Unit	Wall Opening
Width	387	349
Height	302	241
Recess	90	95
Projection	100	N/A

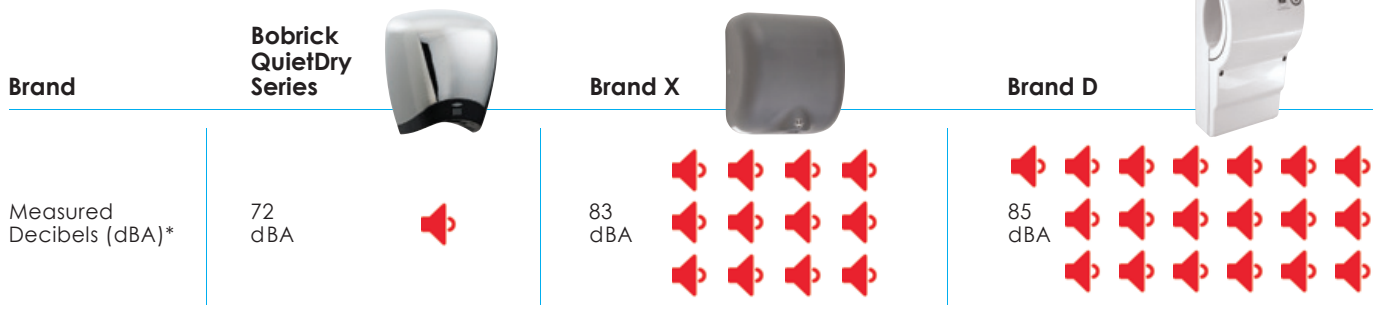


B-710 / B-710E
Compac™
Surface-Mounted Hand Dryer

One-piece, grey moulded plastic cover. Automatic hand sensor. **115V AC**, 15 Amp, 1725 Watts, 60 Hz. cULus Listed. **220-240V AC**, 7 Amp, 1500-1700 Watts, 50/60 Hz. VDE approved, CE marked.

Width	278
Height	278
Depth	132

Sound Level Comparison of Bobrick's QuietDry™ Series with Brand X and D.



*TEST METHODOLOGY: Noise levels declared for all products are measured in a semi-reverberant laboratory settings with dryer mounted at the manufacturer's recommended height. Visit bobrick.com for additional test results.



B-290 Series Welded-Frame Mirrors

One-piece, roll-formed 19 x 19mm angle-frame. Type 304 stainless steel angle with satin-finish. Corners heliarc welded, ground and polished smooth. Bevelled frame edge at mirror for improved appearance. No. 1 quality, 6mm glass mirror; warranted against silver spoilage for 15 years. Galvanised steel back. Secured to concealed wall hanger with theft-resistant mounting.

Model No.	W	H	Model No.	W	H
B-290 1830	46cm	76cm	B-290 2448	61cm	122cm
B-290 1836	46cm	91cm	B-290 2460	61cm	152cm
B-290 2430	61cm	76cm	B-290 2472	61cm	183cm
B-290 2436	61cm	91cm			

Special-Order Custom Size B-290 Series Mirrors

Maximum size of one piece of mirror: 366 x 183cm. Maximum frame size available: 457 x 183cm with two pieces of glass. To specify special sizes, use Series Number followed by width and height in inches.



B-165 Series Channel-Frame Mirrors

One-piece, 13 x 13mm channel-frame. Type 430 stainless steel with bright-polished finish. Mitred corners. Frame screw permits easy replacement of glass. No. 1 quality, 6mm glass mirror warranted against silver spoilage for 15 years. Galvanised steel back. Secured to concealed wall hanger with theft-resistant mounting.

Model No.	W	H	Model No.	W	H
B-165 1824	46cm	61cm	B-165 2436	61cm	91cm
B-165 1830	46cm	76cm	B-165 2448	61cm	122cm
B-165 1836	46cm	91cm	B-165 2460	61cm	152cm
B-165 2430	61cm	76cm	B-165 4836	122cm	91cm

Special-Order Custom Size B-165 Series Mirrors

Maximum size mirror: 224 x 183cm. To specify special sizes, use Series Number followed by width and height in inches.

B-292 Series Welded-Frame Mirror/Shelf Combination

Same mirror as B-290 Series. Type 304 satin-finish stainless steel shelf. Shelf projects 102mm, with 19mm return on front; return edges hemmed for rigidity and safety. Shelf corners heliarc welded, ground and polished smooth.

Model No.	W	H	Model No.	W	H
B-292 1830	46cm	76cm	B-292 2436	61cm	91cm
B-292 1836	46cm	91cm			

Special-Order Custom Size B-292 Series Mirrors

Maximum frame size available: 244 x 183cm with one piece of glass. Maximum size of shelf: 244cm furnished as one piece. To specify special sizes, use Series No. followed by width and height in inches.

B-166 Series Channel-Frame Mirror/Shelf Combination

Same mirror as B-165 Series. Type 304 satin-finish stainless steel shelf. Shelf projects 141mm with 19mm return at front; front return edge hemmed for rigidity and safety.

Model No.	W	H	Model No.	W	H
B-166 1824	46cm	61cm	B-166 1836	46cm	91cm
B-166 1830	46cm	76cm	B-166 2436	61cm	91cm

Special-Order Custom Size B-166 Series Mirrors

Maximum size mirror: 152 x 122cm. Maximum shelf length: 61cm. To specify special sizes, use Series Number followed by width and height in inches.



B-2908 Series
Standard Size Tempered Glass Mirrors

Tempered glass mirrors are engineered for heavy-traffic, vandal-prone bathrooms in stadiums, outdoor recreation centres and low-supervision facilities such as parks and public toilets.

Tempered glass mirrors resist breakage and provide a measure of safety from broken glass, but differ in colour and reflective quality from standard glass mirrors. Bobrick uses the highest quality tempered glass mirrors. Modest distortion or heat-generated markings are normal in the tempered glass mirror manufacturing process. Therefore, Bobrick will not accept returns of tempered glass mirrors with random distortion or markings.

B-2908 Series
Standard Size Tempered Glass Welded-Frame Mirrors

Same frame as B-290 Series. 6mm tempered glass mirror.

Model No.	W	H
B-2908 1830	46cm	76cm
B-2908 1836	46cm	91cm
B-2908 2436	61cm	91cm

B-1658 Series
Standard Size Tempered Glass Channel-Frame Mirrors

Same frame as B-165 Series. 6mm tempered glass mirror.

Model No.	W	H
B-1658 1830	46cm	76cm
B-1658 2436	61cm	91cm

Special-Order Reflective Surfaces

Polished Stainless Steel, Tempered and Laminated Glass Mirrors resist breakage and provide a measure of safety from broken glass, but differ in colour and reflective quality from standard glass mirrors. Modest distortion is normal and not a returnable condition. Available on special order.

Polished Stainless Steel

- B-1556 Series Mirrors (up to 122 x 91 cm)
- B-1656 Series Mirrors (up to 152 x 91 cm)
- B-2906 Series Mirrors (up to 152 x 91 cm)

Tempered Glass

- B-1658 Series Mirrors (up to 244 x 122cm)
- B-2908 Series Mirrors (up to 305 x 122cm))

Laminated Glass

- B-1659 Series Mirrors (up to 213 x 122cm)
- B-2909 Series Mirrors (up to 213 x 122cm)



B-293

B-294

Improved

B-293 Series
Fixed-Position Tilt Mirrors

Provide visibility for wheelchair patients. Type 304 stainless steel, satin-finish frame with bevelled edges provides gapless fit for improved appearance and safety. No. 1 quality, 6mm glass mirror electrolytically copper-plated. Extends 111mm from wall at top and tapers to 33mm at bottom. Mounting frame with tumbler lock is separate for easy replacement of glass.

Model No.	W	H	Model No.	W	H
B-293 1830	46cm	76cm	B-293 1836	46cm	91cm
			B-293 2436	61cm	91cm

Special-Order Custom Size B-293 Series Mirrors

Maximum size mirror: 122 x 91cm.

B-294 Series
Angle-Frame Two Position Tilt Mirror

Tilt forward to provide full visibility for wheelchair patients or return to upright position. Frame is 19 x 19mm, type 304 stainless steel angle, satin-finish. Bevelled edges of frame hug mirror; provides gapless fit for improved appearance, and safety when cleaning mirror. No. 1 quality, 6mm glass mirror electrolytically copper-plated. Top of mirror tilts 178mm from wall with self-locking mechanisms; bottom of mirror mounts to wall with full-length stainless steel hinge.

Model No.	W	H
B-294 1830	46cm	76cm

Special-Order Custom Size B-294 Series Mirrors

Maximum size mirror: 91 x 61cm.

Notes:

1. To specify mirrors, use Series Number desired followed by width, then height in inches.
2. Framed mirrors are manufactured to overall dimensions.
3. Framed mirrors must be installed with width and height dimensions as ordered.
4. Mirror back and wall hanger cannot be installed sideways to reverse width and height dimensions.
5. For framed mirrors, provide minimum 25mm clearance at top and each side of mirror for mounting on wall hanger.



KB110-SSRE-INB
Koala Kare Horizontal, Recessed
Baby Changing Station

Satin-finish stainless steel exterior with grey polyethylene interior. Smooth, concave changing bed with safety straps, liner dispenser, bag hooks and moulded instructions.

KB110-SSWM-INB Similar to KB110-SSRE-INB, but wall-mounted.

	KB110-SSRE-INB	Unit KB110-SSWM-INB	Wall Opening KB110-SSRE-INB
Width	940	892	902
Height	584	508	521
Recess	108	N/A	108
Projection, Closed	6	102	N/A
Projection, Open	381	483	N/A
Recommended Mounting Height	1181	1181	1181



KB111-SSRE-INB
Koala Kare Vertical, Recessed
Baby Changing Station

Satin-finish stainless steel exterior with grey polyethylene interior. Smooth, concave changing bed with safety straps, liner dispenser, bag hooks and moulded instructions.

KB111-SSWM-INB Similar to KB111-SSRE-INB, but wall-mounted.

	KB111-SSRE-INB	Unit KB111-SSWM-INB	Wall Opening KB111-SSRE-INB
Width	616	565	562
Height	1003	902	905
Recess	102	N/A	102
Projection, Closed	38	133	N/A
Projection, Open	794	889	N/A
Recommended Mounting Height	1591	1499	N/A



KB200-01SS
Koala Kare Horizontal, Wall-Mounted
Baby Changing Station with Stainless Steel Veneer

Grey polypropylene with heavy-duty 6-point mounting which supports 91kg with virtually no deflection from 90°. Concealed hardware, dual bed liner dispensers and bag hooks. Also in white granite (-05).

KB200-01SS-INB Similar to KB200-01SS, but labelled for EN Compliance.

Width	894
Height	565
Projection, Closed	102
Projection, Open	589
Recommended Mounting Height	1295



KB200-00
Koala Kare Horizontal, Wall-Mounted
Baby Changing Station

Cream polypropylene with heavy-duty 6-point mounting which supports 91kg with virtually no deflection from 90°. Concealed hardware, dual bed liner dispensers and bag hooks. Also in grey (-01), white granite (-05) and earth (-11).

KB200-00-INB Similar to KB200-00, but labelled for EN Compliance.

Width	894
Height	565
Projection, Closed	102
Projection, Open	589
Recommended Mounting Height	1295



KB208-01
Koala Kare Oval Wall-Mounted
Baby Changing Station

Grey polyethylene with steel pivot rod secured in metal tube. 2 bag hooks. Also in Grey Granite (-12) and Sandstone (-14).

KB208-01-INB Similar to KB208-01, but labelled for EN Compliance.

Width	864
Height	533
Projection, Closed	102
Projection, Open	533
Recommended Mounting Height	1073



KB101-00-INB
Koala Kare Vertical, Wall-Mounted
Baby Changing Station

Cream polyethylene. Smooth, concave changing bed with safety straps, integral liner dispenser, bag hooks and moulded instructions, including Braille. Also in grey (-01) and white granite (-05).

Width	559
Height	902
Projection, Closed	133
Projection, Open	889
Recommended Mounting Height	1499



KB102-00-INB
Koala Kare Wall-Mounted
Child Protection Seat

Cream polyethylene. Mounts on wall or partition of toilet compartment. Contoured seat with textured surface. Safety straps extend over child's shoulders and between legs for security. Also in grey (-01).

Width	311
Height	476
Projection, Closed	143
Projection, Open	317
Recommended Mounting Height	Bottom of unit 51mm above bottom of partition panel; or 356mm above floor.

Microban™ antibacterial product protection: a Koala Baby Changing Station exclusive.

Microban™ technology is built into Koala Baby Changing Stations and becomes an intrinsic part of the Station. When microbes, such as bacteria, mould and mildew that can cause stains, odours and product deterioration come into contact with the station surface, Microban™ protection penetrates the cell wall of the microbe and disrupts key cell functions so that the microbe cannot function, grow or reproduce. Microban™ helps Koala Baby Changing Stations stay cleaner between cleanings.

Notes:

1. All Baby Changing Stations feature steel-on-steel hinge.
2. Complies with EN 12221-1/-2 European Standards (KB200-INB, KB200-SS-INB and KB208-INB only), ANSI S117.1 Accessible and Usable Buildings and Facilities, ASTM F2285-04 Standard Consumer Safety Performance Specification for Diaper Changing Tables for Commercial Use, and ASTM G22 Antibacterial Standards, ADA Accessibility Standards for height (except KB101 and KB111), reach, projection, operation when correctly installed.
3. All Baby Changing Station models (except KB208) equipped with built-in Sanitary Bed Liner Dispensers. Liners sold separately.



Cubicle Collection

This suite of products adds convenience and style to any washroom or toilet cubicle. Featuring contemporary styling, the models share common elements such as coordinated threaded escutcheons and post diameters.

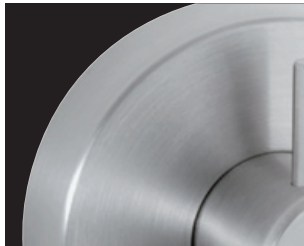
Satin-Finish Models:

- B-541** Spare Toilet Roll Holder. See below.
- B-542** Coat Hook. See page 35.
- B-543** Single Roll Toilet Tissue Dispenser. See below.
- B-544** Toilet Brush Holder. See page 37.
- B-545** Towel Bar. See page 37.

New

Bright-Polished Models:

- B-5416** Spare Toilet Roll Holder. See below.
- B-5426** Coat Hook. See page 35.
- B-5436** Single Roll Toilet Tissue Dispenser. See below.
- B-5446** Toilet Brush Holder. See page 37.
- B-5456** Towel Bar. See page 37.



Beveled edges for design distinction.



Lustrous satin finish.



Continuity of diameter dimensions.



B-541 Cubicle Collection Spare Toilet Roll Holder

Satin-finish stainless steel. Threaded flange conceals mounting plate, provides snug fit to the wall. Vertical post accommodates one roll up to 127mm diameter and a core size from 19mm to 38mm. See pages 27, 35 and 37 for other Cubicle Collection models.

B-5416 Similar to B-541, but with bright-polished finish.

	B-541	B-5416
Flange Width	50	50
Height	202	202
Depth	88	88



B-543
Cubicle Collection
Surface-Mounted Toilet Tissue
Dispenser for Single Roll

Satin-finish stainless steel. Threaded flange conceals mounting plate, provides snug fit to the wall. Accepts standard-core size from 19mm - 38mm and 102mm wide. See pages 26, 35 and 37 for other Cubicle Collection models.

B-5436 Similar to B-543, but with bright-polished finish.

	B-543	B-5436
Width	140	140
Height	115	115
Depth	33	33



B-4288
ConturaSeries
Surface-Mounted Multi-Roll
Toilet Tissue Dispenser

Satin-finish stainless steel unit with stainless steel dispensing mechanism. Flush key lock. Holds two rolls up to 133mm diameter (1800 sheets). Extra roll automatically drops in place when bottom roll is depleted. Theft-resistant, heavy-duty spindles.

Width	154
Height	279
Depth	151
Accessibility Mounting Height	710



B-4388
ConturaSeries
Recessed Multi-Roll Toilet Tissue Dispenser

Satin-finish stainless steel unit with stainless steel dispensing mechanism. Flush key lock. Holds two rolls up to 133mm diameter (1800 sheets). Extra roll automatically drops in place when bottom roll is depleted. Theft-resistant, heavy-duty spindles.

	Unit	Wall Opening
Width	192	159
Height	318	286
Recess	76	80
Projection	75	N/A
Accessibility Mounting Height	730	710



B-27313
ClassicSeries
Surface-Mounted Three Roll
Toilet Tissue Dispenser

Satin-finish stainless steel. Holds three toilet tissue rolls up to 114mm diameter. Extra rolls drop into place when bottom roll is finished.

Width	117
Height	378
Depth	127
Accessibility Mounting Height	710



B-2888
ClassicSeries
Surface-Mounted Multi-Roll
Toilet Tissue Dispenser

Satin-finish stainless steel unit with stainless steel dispensing mechanism. Door has flat face with protruding key lock. Holds two rolls up to 133mm diameter (1800 sheets). Extra roll automatically drops in place when bottom roll is depleted. Theft-resistant, heavy-duty spindles.

Width	154
Height	279
Depth	151
Accessibility Mounting Height	710



B-386
ClassicSeries
Partition-Mounted Multi-Roll Toilet Tissue Dispenser (Serves Two Toilet Compartments)

Satin-finish stainless steel. Mounts centred through toilet partitions; accessible from both sides. Holds four standard core toilet tissue rolls up to 130mm diameter; two for each side. Chrome-plated plastic spindles with heavy-duty internal springs.

	Unit	Partition Opening
Width	337	292
Height	302	276
Partition Thickness	13-38	N/A
Projection	19-44	N/A
Accessibility Mounting Height	700	699



B-3888
ClassicSeries
Recessed Multi-Roll Toilet Tissue Dispenser

Satin-finish stainless steel unit with stainless steel dispensing mechanism. Door has flat face with protruding key lock. Holds two rolls up to 133mm diameter (1800 sheets). Extra roll automatically drops in place when bottom roll is depleted. Theft-resistant, heavy-duty spindles.

	Unit	Wall Opening
Width	192	159
Height	318	286
Depth	76	80
Recess	75	N/A
Accessibility Mounting Height	730	710



B-272
Surface-Mounted Toilet Tissue Cabinet

Satin-finish stainless steel. Equipped with key lock; vandal-resistant. Dispenses either single or doublefold toilet tissue. Large capacity: 1330 singlefold tissues up to 152mm long. Slots in cabinet indicate refill time.

B-2721 Similar to B-272, with larger cabinet for single-fold tissue lengths 190mm or greater (fold-depth 95mm+).

	B-272	B-2721
Width	127	129
Height	227	230
Depth	76	109



B-273
Surface-Mounted Toilet Tissue Dispenser

Heavy-duty cast aluminium, satin-finish. High-impact plastic spindles have concealed locking device. Holds one roll up to 152mm diameter (2000 sheets). Controlled delivery.

B-2730 Similar to B-273, without controlled delivery.

B-274 Similar to B-273, holds two rolls. Controlled delivery.

B-2740 Similar to B-274, without controlled delivery.

	B-273	B-274
Width	165	318
Height	38	38
Depth	125	125



B-2890
Surface-Mounted Single Jumbo Roll Toilet Tissue Dispenser

Satin-finish type 304 stainless steel. Equipped with key lock. Spindle holds one 254mm diameter roll with 76mm diameter core. Convertible for 55mm and 41mm diameter core rolls. Powder-coated mounting plate. Slot in door reveals tissue supply.

Diameter	271
Depth	114



B-2892
Surface-Mounted Twin
Jumbo Roll Toilet Tissue Dispenser

Satin-finish stainless steel. Equipped with key lock. Spindles hold two 254mm diameter rolls with 57mm diameter core rolls; convertible for 76mm diameter core rolls. Sliding access panel exposes one roll at a time, allows easy roll change-over. Wide viewing slot in door.

Width	529
Height	289
Depth	135



B-685
Surface-Mounted Toilet Tissue
Dispenser for Single Roll

Bright-polished stainless steel. Support arm flanges lock to concealed stainless steel wall plate. Chrome-plated plastic spindle holds rolls up to 140mm diameter (1800 sheets).

Width	184
Height	51
Depth	100

B-6857 Similar to B-685, but with satin finish.

B-7685 Similar to B-685.

B-76857 Similar to B-7685, but with satin finish.



B-686
Surface-Mounted Toilet Tissue
Dispenser for Two Rolls

Bright-polished stainless steel. Support arm flanges lock to concealed stainless steel wall plate. Chrome-plated plastic spindles hold rolls up to 140mm diameter (1800 sheets).

Width	318
Height	51
Depth	100

B-6867 Similar to B-686, but with satin finish.

B-7686 Similar to B-686.

B-76867 Similar to B-7686, but with satin finish.



B-699
Recessed Toilet Tissue Dispenser
with Hood for Two Rolls

Bright-polished stainless steel. Hoods protect paper. Chrome-plated plastic spindles hold rolls up to 130mm diameter (1500 sheets).

	Unit	Wall Opening
Width	313	298
Height	157	133
Recess	48	86
Projection	70	N/A

B-6997 Similar to B-699, but with satin finish.



B-6999
Surface-Mounted Toilet Tissue
Dispenser with Hood for Two Rolls

Bright-polished stainless steel. Hoods protect paper. Chrome-plated plastic spindles hold rolls up to 130mm diameter (1500 sheets).

	B-6999	B-6699
Width	314	157
Height	157	157
Depth	121	121

B-69997 Similar to B-6999, but with satin finish.

B-6699 Similar to B-6999, but one roll only.

B-66997 Similar to B-6699, but with satin finish



B-270
ConturaSeries
Surface-Mounted Sanitary Bin

Satin-finish stainless steel. Cover is drawn, one-piece construction; secured to cabinet with full length stainless steel piano-hinge. 3.8L.

Width	191
Height	254
Depth	97
Accessibility Mounting Height	762



B-4353
ConturaSeries
Recessed Sanitary Bin

Satin-finish stainless steel. Self-closing door pulls down for access to disposal. Furnished with removable, leak-proof, 4.5L plastic bin.

Width	324
Height	279
Depth	100
Projection	33
Accessibility Mounting Height	762



B-4354
ConturaSeries
Partition-Mounted Sanitary Bin

Satin-finish stainless steel. Mounts centred through toilet partitions. Self-closing doors pull down on both sides for access to disposal. Removable, leak-proof, 2.7L plastic bin.

Width	324
Height	279
Depth	13-32
Projection	33
Accessibility Mounting Height	762



B-35303
TrimLineSeries
Recessed Sanitary Bin

Satin-finish stainless steel. Door has 90° return, conceals flange. Self-closing panel covers disposal opening. Removable, leak-proof, 4.5L plastic bin.

	Unit	Wall Opening
Width	330	292
Height	481	438
Recess	92	95
Projection	14	N/A



B-254
ClassicSeries
Surface-Mounted Sanitary Bin

Satin-finish stainless steel. Door has key lock. Self-closing panel covers disposal opening. Removable, leak-proof, 4.5L plastic bin.

Width	271
Height	384
Depth	103



B-353
ClassicSeries
Recessed Sanitary Bin

Satin-finish stainless steel. Seamless, bevelled flange. Door has key lock. Self-closing panel covers disposal opening. Removable, leak-proof, 4.5L plastic bin.

	Unit	Wall Opening
Width	324	286
Height	437	397
Recess	100	102
Projection	3	N/A



B-354
ClassicSeries
Partition-Mounted Sanitary Bin

Satin-finish stainless steel. Mounts centred through toilet partition. Self-closing panels cover openings on both sides. Removable, leak-proof, 4.6L plastic bin.

	Unit	Partition Opening
Width	324	279
Height	437	394
Partition Thickness	13-32	N/A
Projection	71-90	N/A



B-3541
Surface-Mounted Sanitary Disposal
Bag Dispenser

Satin-finish stainless steel. Equipped with concealed locking device. Concealed wall plate 0.8mm (22-gauge) type 304 stainless steel. Holds one pack of 25 two-ply plastic bags.

Width	95
Height	135
Depth	25



- Check with your local Bobrick distribution partner for regionally-compliant products.
- Clearance between wall and grab bar is 38mm.
- Constructed of satin-finish stainless steel tubing in 32mm and 38mm diameters.
- Peened non-slip gripping surface available on all Series. Add suffix .99 to model number. Bar 1.2mm (18-gauge), type 304 stainless steel.
- Bar passes through flange and is heliarc welded to form single structural unit.
- Compliance with structural strength requirements: grab bars that provide 38mm clearance from the wall can support loads in excess of 408kg when properly installed.
- Mandrel bending process ensures uniform bar diameter around curves.
- All joints and supports are contour-cut and welded.
- Concealed anchors and fasteners available as an optional accessory.

Series	Diameter	*Finish
*B-6806	38	Satin-Finish
*B-5806	32	Satin-Finish

*Peened non-slip gripping surface available. Add suffix .99 to model number.

Improved



Concealed Mounting

More mounting options. Cover snaps over mounting flange to conceal screws. Concealed mounting flange 3mm thick, type 304 stainless steel plate, 51mm wide x 79mm high, with screw holes for concealed anchors. Cover is 0.8mm (22-gauge), type 304 stainless steel with satin-finish, 83mm diameter.



B-6806 Straight Grab Bar

Satin-finish stainless steel grab bar for bath/shower/toilet compartment. Snap flange.

B-6806.99 Similar to B-6806, but with peened non-slip grip.

Bar Diameter	38
Length	305
	457
	610
	762
	914
	1067
	1219



B-68137 Two-Wall Horizontal Grab Bar

Satin-finish stainless steel grab bar for bath/shower/toilet compartment. Snap flange.

B-68137.99 Similar to B-68137, but with peened non-slip grip.

Bar Diameter	38
Width	914
Length	1372



B-68616 Two-Wall Horizontal Grab Bar

Satin-finish stainless steel grab bar for bath/shower/toilet compartment. Snap flange.

B-68616.99 Similar to B-68616, but with peened non-slip grip.

Bar Diameter	38
Width	610
Length	914



B-5806
Straight Grab Bar

Satin-finish stainless steel grab bar for bath/shower/toilet compartment. Snap flange.

B-5806.99 Similar to B-5806, but with peened non-slip grip.

Bar Diameter	32
Length	457
	610
	762
	914
	1067
	1219



B-58616
Two-Wall Horizontal Grab Bar

Satin-finish stainless steel grab bar for bath/shower/toilet compartment. Snap flange.

B-58616.99 Similar to B-58616, but with peened non-slip grip.

Bar Diameter	32
Width	610
Length	914

Improved



B-4998
Wall-Mounted Swing-Up Grab Bar

Stronger welds and refined finish provide improved aesthetics. Satin-finish stainless steel grab bar for tub/shower/toilet compartment. Exposed mounting.

B-4998.99 Similar to B-4998, but with peened non-slip grip.

Bar Diameter	32
Bar Length	737
Mounting Plate Width	155
Mounting Plate Height	220



B-5181
Surface-Mounted Reversible Folding Shower Seat

Seat is constructed of durable, water-resistant, ivory-coloured, 13mm thick compact grade laminate. Reversible for left- or right-hand field installation. Frame and mounting brackets are type 304 stainless steel with self-locking mechanism. Supports up to 163kg when correctly installed and used. Left-handed seat shown.

Width	838
Projection, Closed	140
Projection, Open	567
Typical Mounting Height	430-485



B-5191
Surface-Mounted Folding Shower Seat

Compact design. Seat is constructed of durable, water-resistant, ivory-coloured, 8mm thick compact grade laminate. Frame and mounting bracket are type 304 stainless steel and feature self-locking mechanism. Supports up to 227kg when correctly installed and used.

Width	457
Projection, Closed	140
Projection, Open	402
Typical Mounting Height	430-485



B-4221
ConturaSeries
Surface-Mounted Seat Cover Dispenser

Satin-finish stainless steel. Dispenses 250 single- or half-fold toilet seat covers. Fills from bottom.

Width	400
Height	286
Depth	56
Accessibility Mounting Height	760



B-3013
TrimLineSeries
Recessed Seat Cover Dispenser

Satin-finish stainless steel. Door has 90° return, conceals flange. Dispenses 500 toilet seat covers.

	Unit	Wall Opening
Width	446	403
Height	332	291
Recess	64	70
Accessibility Mounting Height	1240	1220



B-221
ClassicSeries
Surface-Mounted Seat Cover Dispenser

Satin-finish stainless steel. Dispenses 250 single- or half-fold toilet seat covers. Fills from bottom.

Width	400
Height	279
Depth	51
Accessibility Mounting Height	760



B-3574
ClassicSeries
Recessed Seat Cover Dispenser, Sanitary Napkin Disposal, Toilet Tissue Dispenser

Satin-finish stainless steel. Seamless bevelled flange. Mounts in side wall of single compartment. Capacity: 3.0L. Holds 500 toilet seat covers and two rolls of tissue. Theft-resistant spindles.

B-357 Similar to B-3574, but mounts centred through toilet partition. Used from both sides, serviced from one side.

B-3579 Similar to B-3574, but with stainless steel skirt for surface mounting.

	Unit			Wall Opening	
	3574	357	3579	3574	357
Width	437	437	437	406	394
Height	778	778	785	743	733
Overall Depth	106	110	106	102	N/A
Mounting Thickness	N/A	13-51	N/A	N/A	13-51
Accessibility Mounting Height	1100	1100	1130	1075	1075



B-3474
ClassicSeries
Recessed Seat Cover Dispenser and Toilet Tissue Dispenser

Satin-finish stainless steel. Seamless bevelled flange. Mounts in side wall of single compartment. Holds 500 toilet seat covers and two rolls of tissue. Theft-resistant spindles.

	Unit	Wall Opening
Width	437	406
Height	778	743
Depth	100	102
Accessibility Mounting Height	1100	1075



B-297
Surface-Mounted Medicine Cabinet

All-steel cabinet and two fixed shelves with baked white enamel finish. Mirror: No. 1 quality, 3mm glass electrolytically copper-plated. Door has enameled steel piano-hinge and magnetic catch.

B-397 Recessed Medicine Cabinet Similar to B-297 for recessed installation. Three adjustable plastic shelves.

	B-297	Unit B-397	Wall Opening B-397
Width	359	403	356
Height	514	657	600
Depth	95	83	89
Projection	N/A	25	N/A
Accessibility Mounting Height	1495	1595	1625



B-299
Surface-Mounted Medicine Cabinet

Type 304 stainless steel, satin-finish. Mirror: No. 1 Quality, 6mm glass electrolytically copper-plated. 15-year guarantee against silver spoilage. Door has full-length stainless steel piano-hinge, magnetic catch and cable doorstop. Four adjustable stainless steel shelves. Cabinet may be inverted for right- or left-hand door swing.

B-398 Recessed Medicine Cabinet Similar to B-299 for recessed installation.

	B-299	Unit B-398	Wall Opening B-398
Width	432	432	387
Height	683	683	648
Depth	127	87	92
Projection	N/A	45	N/A
Accessibility Mounting Height	1630	1630	1655



B-542
Cubicle Collection Coat Hook

Satin-finish stainless steel. Threaded flange conceals mounting plate, provides snug fit to the wall. Flange has 50mm diameter. Projects 33mm from wall. See pages 26, 27 and 37 for other Cubicle Collection models.

New **B-5426** Similar to B-542, but with bright-polished finish.



B-671
Surface-Mounted Single Robe Hook

Bright-polished stainless steel. Flange is 51 x 51mm. Projects 51mm from wall.

B-6717 Similar to B-671, but with satin finish.

B-7671 Similar to B-671. Projects 41mm from wall.

B-76717 Similar to B-7671, but with satin finish.



B-682
Surface-Mounted Hat and Coat Hook

Bright-polished stainless steel. Flange is 51 x 51mm. Hook 25mm wide, 165mm high; projects 80mm from wall.

B-6827 Similar to B-682, but with satin finish.



B-672

Surface-Mounted Double Coat Hook

Bright-polished stainless steel. Contoured 102mm wide bar forms hook at each end. Flange is 51 x 51mm. Projects 59mm from wall.

B-6727 Similar to B-672, but with satin finish.

B-7672 Similar to B-672. Projects 49mm from wall.

B-76727 Similar to B-7672, but with satin finish.



B-211

Surface-Mounted Heavy-Duty Clothes Hook with Exposed Mounting

One-piece brass casting with satin nickel-plated finish. Three exposed countersunk mounting screw holes. 70mm diameter, projects 87mm. Withstands 136kg downward pull.

B-2116 Similar to B-211, but with three concealed mounting screw holes. Locks to wall plate with three stainless steel setscrews for theft-resistant mounting.



B-677

Surface-Mounted Towel Pin

Bright-polished stainless steel. Flange is 51 x 51mm. Projects 86mm from wall.

B-6777 Similar to B-677, but with satin finish.



B-212

Surface-Mounted Clothes Hook and Bumper

Solid aluminium casting, matte finish. Rubber bumper protects wall or partition surfaces. 38mm wide, 51mm high; projects 95mm from wall.



B-233

Surface-Mounted Clothes Hook

3.2mm (11-gauge), type 304 stainless steel, satin finish. 32mm wide, 57mm high; projects 29mm from wall.



B-670

Surface-Mounted Utility Hook

Bright-polished stainless steel. For clothes, bags or accessories. Flange is 51 x 51mm. Hook 13mm wide, projects 51mm from wall.

B-6707 Similar to B-670, but with satin finish.



B-544
Cubicle Collection
Toilet Brush Holder

Heavy-duty type 304 stainless steel, satin finish. Vandal-resistant wall-mounting bracket. Stainless steel handle with nylon brush head. Water reservoir included. Overall height 403mm; projects 103mm from wall. See pages 26, 27, 35 and below for other Cubicle Collection models.

New **B-5446** Similar to B-544, but with bright-polished finish.



B-287
Surface-Mounted Folding Utility Shelf

Type 304 stainless steel, satin finish. Easily installed on toilet partition or wall. Pull-down shelf returns to upright position when not in use. Supports 45kg when correctly installed. 146mm wide, 368mm long.



B-687
Surface-Mounted Door Bumper

Bright-polished stainless steel. Flange is 51 x 51mm. Black nylon post with black neoprene bumper. Projects 54mm from wall.



B-545
Cubicle Collection-Coordinated
Surface-Mounted Towel Bar

Satin-finish stainless steel. Threaded flanges conceal mounting plates, provide snug fit to the wall. Flanges have 50mm diameter, projects 33mm from wall. Available in 457mm and 610mm lengths. See pages 26, 27, 35 and above for Cubicle Collection models.

New **B-5456** Similar to B-545, but with bright-polished finish.



B-673
Surface-Mounted Towel Bar

Bright-polished stainless steel. 19mm square towel bar. Available in 450mm and 600mm lengths. Projects 83mm from wall.

B-6737 Similar to B-673, but with satin finish. 600mm length.



B-674
Surface-Mounted Towel Bar

Bright-polished stainless steel. Round 19mm diameter towel bar. Available in 450mm and 600mm lengths. Projects 83mm from wall.

B-6747 Similar to B-674, but with satin finish. 600mm length.



B-676

Surface-Mounted Towel Shelf with Towel Bar

Shelf 159mm wide, consists of four 8mm square tubes firmly mounted in support arms. 8mm square towel bar below shelf. 610mm length. Projects 216mm from wall.



B-683

Surface-Mounted Toiletry Shelf

Bright-polished stainless steel. 610mm length. Shelf 121mm wide, projects 146mm from wall. Edges are roll-formed for safety.



B-680

Surface-Mounted Soap Dish

Bright-polished stainless steel. Drawn, one-piece soap dish welded to support arm and flange. Two ridges to support bar of soap and two drain holes. Unit 114mm wide, 51mm high; projects 86mm from wall.

B-6807 Similar to B-680, but with satin finish.



B-6107

Surface-Mounted Heavy-Duty Shower Curtain Rod

Satin-finish stainless steel rod and flanges. 1.0mm (20-gauge), 25mm diameter rod. Flanges are 64mm square. Available in 914mm, 1219mm, 1524mm, 1829mm lengths.

B-6047 Similar to B-6107, but with 1.2mm (18-gauge), 32mm diameter rod.



B-207

Surface-Mounted Shower Curtain Rod with Concealed Mounting

Satin-finish stainless steel, 1.0mm (20-gauge), 25mm diameter rod. Flanges are 35mm diameter, chrome-plated plastic, bright-polished finish; mount on concealed wall brackets. Available in 914mm, 1219mm, 1524mm, 1829mm lengths.



204-2

Vinyl Shower Curtain

Opaque, matte white vinyl, 0.2mm thick, contains antibacterial and flame-retardant agents. Nickel-plated brass grommets along top. Bottom and sides are hemmed. Curtain 1067mm wide, 1829mm high. Requires 7 hooks, not included.

204-3 Similar to 204-2, but curtain is 1778mm wide, 1829mm high. Requires 12 hooks.

204-1 Shower Curtain Hook Type 304 stainless steel for use on 25mm and 32mm diameter shower curtain rods.

Product Warranties

The following Bobrick products are warranted to be free from defects in workmanship and material under normal usage from the date of purchase for the periods set forth below. (Rust and discoloration to stainless steel parts resulting from exposure to harsh environmental and/or chemical conditions are not considered to be defects in workmanship or material and there is no express or implied warranty for such conditions. Refer to Bobrick Advisory Bulletin TB-21, Effective Ways to Clean Stainless Steel.)

Washroom Accessories/Soap Dispensers	Limited Warranty
ConturaSeries Washroom Accessories	3 years
Soap Dispensers B-26607, B-26617, B-26627, B-26637, B-306, B-4063, B-4112, B-822 Series, B-823 Series, SureFlo Series	3 years
B-2012, B-2013 Automatic Wall-Mounted Dispensers	1 year

The following Bobrick mirrors are warranted against silver spoilage from the date of purchase for the period set forth below:

Mirrors	Limited Warranty
B-290, B-2908, B-292 Series B-165, B-1658, B-166 Series	15 years

The following Bobrick hand dryers are warranted to be free from defects in workmanship and material under normal usage from the date of purchase for the periods set forth below:

Hand Dryers	Limited Warranty
AirCraft™ Dryers B-750 TrimDry B-7120, B-7128 TerraDry B-7188, B-7180 DuraDry B-778, B-770	Motor brushes for 3 years; all other parts for 10 years
Elan™ B-715, B-715E	5 years
Compac™ B-710, B-710E	1 year

The following Koala Kare products are warranted to be free from defects in workmanship and material under normal usage, and a replacement policy against vandalism from the date of purchase for the periods set forth below. KB200, KB200-SS Deflection Statement: Product tested to deflect less than 1-degree from 90-degrees with a 91 kg static load placed in the center of the changing surface.

Koala Kare Products	Limited Warranty
Baby Changing Stations KB100-ST-INB, KB101-INB, KB110-SSRE-INB, KB110-SSWM-INB, KB111-SSWM-INB, KB111-SSRE-INB, KB200, KB200-INB	5 years
Child Protection Seat KB102-INB	5 years

Other Products

Bobrick washroom accessories not listed in this section are warranted to be free from defects in workmanship and material under normal usage service for one year from the date of purchase. (Rust and discoloration to stainless steel parts resulting from exposure to harsh environmental and/or chemical conditions are not considered to be defects in workmanship or material and there is no express or implied warranty provided for such condition. Refer to Bobrick Advisory Bulletin TB-21, Effective Ways to Clean Stainless Steel.)

Limitations on Warranties

In all instances, the purchaser's exclusive remedy is for the repair or replacement, at Bobrick's option, of warranted defective products or parts. Bobrick will also bear the cost of the purchaser's return of defective products or parts to Bobrick. Bobrick's warranties set forth above do not cover damage resulting from vandalism. No other remedy (including, but not limited to, damages for field labour charges, lost profits, lost sales, injury to persons or property or any other incidental or consequential losses) is available.

Patents

Bobrick products are protected under one or more of the following Patent Numbers: **Australia:** 327567, 327566, 327565, 325470, 308253, 2008239423, 2006332671; **China:** ZL200930004164.1; **Europe:** 001158034-0003, 001158034-0002, 001158034-0001, 1114367-0002, 1114367-0001, 494430-001; **France:** 926706, 916396, 322840-45; **Germany:** M9802686.0, M9303824.0, M9207892.3, 9203131.5, 9203130.7; **Hong Kong:** 9700489.1, 9700488.9, 9700487.7, 9700486.5; **Italy:** 67001, 66879, 66877, 64502; 64352, 64351; **Singapore:** DU2003/563, DU2003/562/I, DU2003/11/B, DU2003/10/F; **Switzerland:** 119685; **Taiwan:** D136662; **United Kingdom:** 2447382, 2031213, 2026406, 2026405, 2026390, 2022641, 2022640. Other patents pending.

Trademarks

1. Bobrick trademark is registered with the United States Patent and Trademark Office and as a trademark in several countries throughout the world.
2. Koala Kare trademark is registered with the United States Patent and Trademark Office and as a trademark in several countries throughout the world.
3. MICROBAN trademark is registered with the United States Patent and Trademark Office and as a trademark in numerous countries throughout the world.
4. Remaining Bobrick trademarks are registered with the United States and Canadian patent and trademark offices and in some other countries throughout the world.

Illustrations and descriptions herein are applicable to production as of the date of this catalogue. The manufacturer reserves the right to, and does from time to time, make changes and improvements in designs and dimensions. Catalogue No. IWAE16, 10M. March 2016. © 2016 Bobrick Washroom Equipment, Inc. Printed in USA.

Note: Prior to purchasing non-proprietary dispensers, Bobrick recommends that customers contact their local Bobrick distributor to confirm that compatible consumable products are available.



BUILDING VALUE SINCE 1906

Bobrick International	Bobrick.co.uk	Bobrick.la	Bobrick.de	Bobrick.com
Europe	 +44 (0)20 8366 1771			euoffice@bobrick.com
UK	+44 (0)20 8366 1771			info@bobrick.co.uk
Germany	0800.79.00.456			info@bobrick.de
Spain	+34 609 791 484			info@bobrick.com.es
Latin America	+1.954.755.8934			info@bobrick.la
Middle East	+971 (50) 1747386			infomea@bobrick.com
Australia	1800.353158			info@bobrick.com.au
Asia	+971 (50) 1747386			infomea@bobrick.com
Global HQ	+1.818.764.1000			international@bobrick.com