

**ffuuss**<sup>TM</sup>  
Air hugs technology

2018



[www.ffuuss.com](http://www.ffuuss.com)  
T. 902 883 083

## ffuuss™

ffuuss™ is part of a holding comprised of companies that are experts in fields related to injection.

### **Injector**

Research and development of new types of tools, the creation of prototypes and special series.

### **Injector Business**

Assembling and decoration of injected products.

### **Solsomot**

Design, development, manufacturing and maintenance of moulds and tools for moulds and injection.

Within this holding, ffuuss™ focuses on the marketing of the end product, in line with the Group's philosophy: extremely high quality adapted to the needs of every customer.

The combination of invention, design, technology and manufacturing in a seamlessly integrated team produces greater flexibility, faster response, better prices and, above all, the highest level of commitment to its customers.

Complete autonomy for the generation of ideas and their production is the driving force behind ffuuss™ and the guarantee that the hand dryer is the first of many projects still to come.

### **ffuuss™ environments**

Some of its many benefits include its minimalist design and innovative lines and the possibility of customizing the dryer. All this means that ffuuss™ Hand Dryers are suitable for any environment.

From shopping centres, airports, restaurants, schools, gyms, hotels, ... to homes even. In short, any environment in which hygiene, sustainability and comfort are valued is a suitable environment to enjoy the benefits of a ffuuss™ Hand Dryer.





**01** HEPA filter

---

**02** Preheat

---

**03** Air outlets

---

**04** Diagnostic laser light

---

**05** Chromotherapy

---

**06** Water tank

---

**07** Diagnostic light

---

**08** Telemetry system

---

**09** Capacitive sensor

---

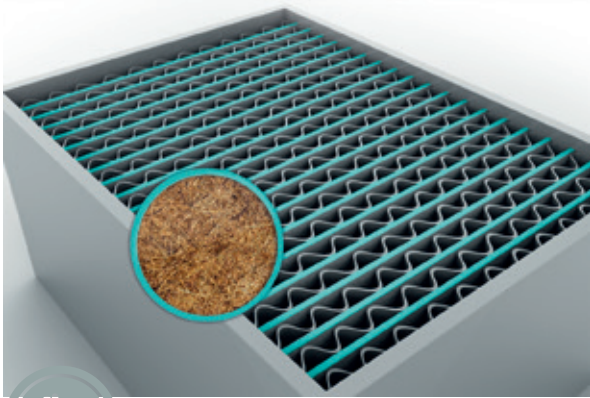
**10** Colours and finishes

---

**11** Technical information

---





## 01 Filter HEPA / Treatment with antibacterial additives

The ffuuss™ Hand Dryers contain a high quality H13 HEPA filter, which, with an efficiency of 99.97%, guarantees hand drying with clean air. This is especially relevant in food-handling and hospital environments where high standards of disinfection are required.

The ffuuss™ Hand Dryers have been treated with an antibacterial additive (Biomaster), whose active ingredient, based on silver ion technology, prevents growth and formation of new bacterial cells, rendering ffuuss™ Hand Dryers hygienic, over the course of their lifetime.



## 02 Preheat \*

The Preheat is an air heating system, patented by ffuuss™, that works without the need for conventional resistors which have a high consumption and entail certain risks.

The system is activated and controlled by environmental sensors to avoid a constant and unnecessary consumption, making the ffuuss™ Hand Dryer safer and more efficient.

\* Patent pending EU

Patent granted in USA. Number U.S. 9,538,886

\* Doesn't apply to ffuuss™ **.handdryer2**



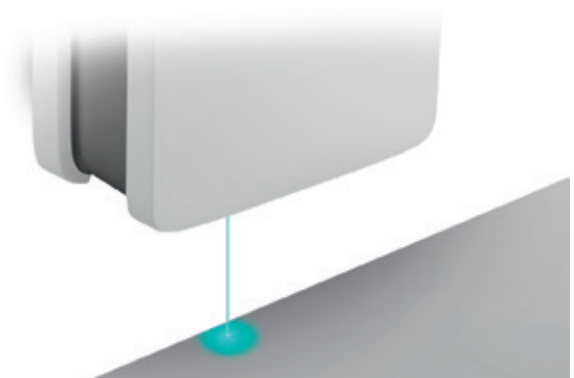
### 03 Air outlets\*

The design and distribution of the air outlets is unique to ffuuss™ and they offer authentic “air hugs”.

The outlets have been designed to ensure the air covers as much of the area of the hands as possible and the combination of their different sizes minimizes air noise. Their oval shape and slight inclination, projects the air in the optimal direction for drying hands.

At the sides, outlets have been incorporated to produce a “curtain effect”, to prevent water splashing out of the drying area.

\* Patent pending



### 04 Laser diagnosis\*

Patented by ffuuss™, it's a unique, silent alarm system, integrated in the design for a quick and easy equipment maintenance control. When the ffuuss™ Hand Dryer projects a fixed red dot on the floor, this means that the water tank has to be emptied, the red dot will disappear once the tank is empty and is returned to its position.

A red blinking dot projected onto the floor means there is a technical problem with the equipment.

\* Patent pending

\* Doesn't apply to ffuuss™ **.handdryer2**



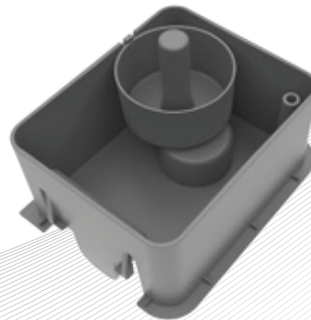
## 05 Chromotherapy\*

LEDs, located in the area where the hands are placed, create a cascade of lighting in different colours that enhance relaxation, wellness and reduce stress.

The colours create a chromotherapeutic effect to enhance wellbeing and mental clarity. The colour experience, combined with the multiple air outlets, is what enables users to enjoy a pleasant hand massage.

\* Patent pending

\* Doesn't apply to ffuuss™ [.handdryer2](#)



## 06 Water tank

The ffuuss™ hand dryers incorporate a water collecting tank, which allows the residual water coming off people's hands during drying to be collected via a drain.



## 07 Diagnostic light

The hand dryer's diagnostics are displayed through the same LED light. A white light indicates normal operation, a steady red light indicates a full water tank and a flashing red light means there is a breakdown.

\* Doesn't apply to ffuuss™ [.handdryer1](#)





## 08 Telemetry system\* / Detection and diagnosis of faults

Patented by ffuuss™, the system is incorporated in both HD-1 and HD-2, and it is very useful both for the distributor and technical service as it allows, using Bluetooth technology, remotely obtaining operational information and possible error codes about the unit. This in turn, eliminates the need to disassemble the dryer.

It is activated by a specific sequence using the capacitive sensors. It runs in Android, IOS and Windows, using an APP that can be downloaded from Google Play, Apple Store and Microsoft Store.

\* Patent pending



## 09 Capacitive sensor\*

In our ffuuss™ Hand Dryer we have incorporated capacitive sensors in our ranges HD-1 and HD-2, so that everyone can enjoy an optimal drying experience.

These sensors, located all around the perimeter of the drying cavity, also allow children and people in wheelchairs to comfortably use the ffuuss™ Hand Dryer, since the drying action is also activated when hands are introduced laterally.

This is a product benefit unique to ffuuss™ in the hand dryer market, and an example of technology at the service of people.

\* Patent pending

# 11 Colours and finishes

## handryer<sup>1</sup>

What is your favourite colour? If you "Do it yourself", choose a dryer of the ffuuss™ HD-1 range you will have available any colour in the Ral or Pantone charts, as well as the finish that best suits your preferences or needs: Chrome, vinyl, hydrographics, even gold.

Do it yourself

Black, dark grey, light grey, grey white, white



### OUR PAINTED COLOURS

#### Basics



#### Trendy



### FINISHES

#### Chrome



#### Special Gold 24k



#### Logotype



#### Vinyl





## handdryer<sup>2</sup>

In the ffuuss™ HD-2 range, six exclusive colours are available for you. Just pick the one you like the most. ffuuss™ leading the way in hand dryer technology offering a comfortable hand drying experience.

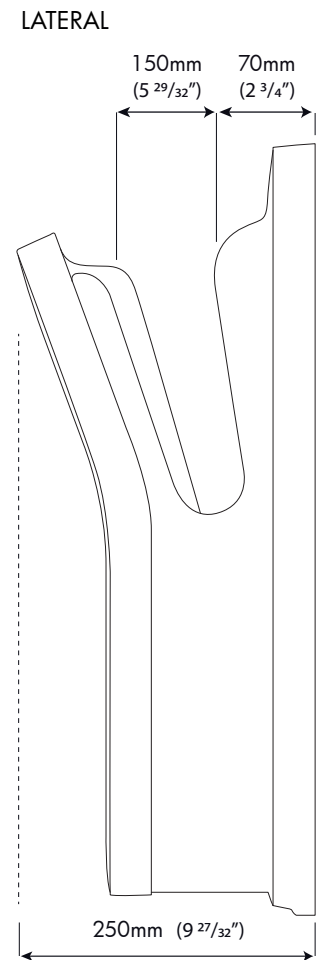
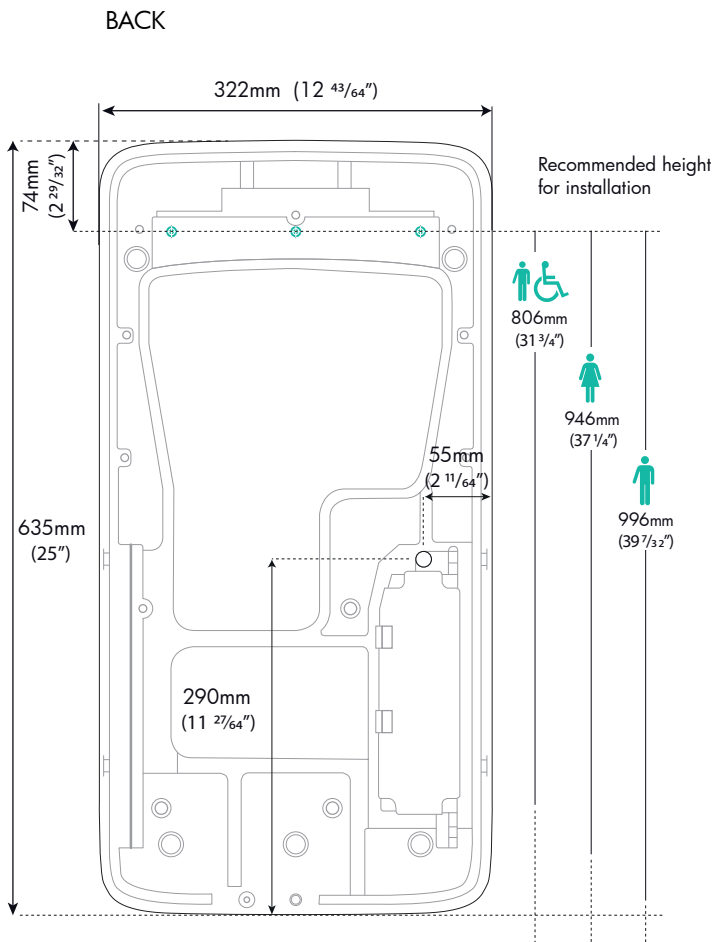
### Co-branding

This allows the ffuuss™ brand space to be shared with the distributor's brand.



### OUR COLOURS ABS Colours





### Electric system

Input voltage	220 - 240 V	110 - 120 V
Frequency	50/60 Hz	50/60 Hz
Nominal power	1100 W	1000 W
Electric current	5A	9A
Type of motor	Universal with Preheat*	Universal with Preheat*
Motor speed	23000 RPM	21500 RPM
Working temperature	40 °C/104 °F	40 °C/104 °F

\*Patented by ffuuss™

### Manufacturing

Cover material: ABS
Treated with Biomaster Silver Ions antibacterial additive
Finish: Various colours
Mounting mooring: Galvanized steel
Water inlet protection: IPX2
Filter: HEPA H13

### Operation

Automatic activation
Approx hand drying time: 12 seconds
Blocking time: 25 seconds
Airflow: Up to 73 l/s (19,3 gal/s)

### Logistics

Net weight: 7,7 Kg (16,1 lb)
Gross weight: 9,2 Kg (19,4 lb)
Box dimensions: 690mm / 360mm / 285mm (H27 1/64" W14 1/64" D11 7/32")

### Regulations

This device complies with the following directives/normatives:  
1999/5/CE 2004/108/CE 2006/95/CE  
2002/96/EC 2011/65/EC



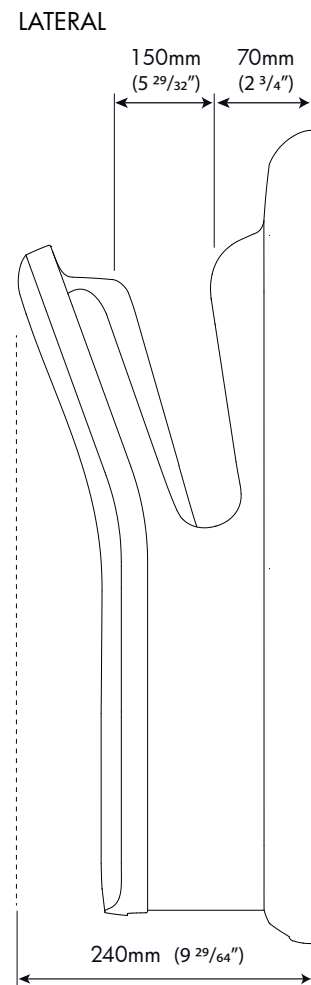
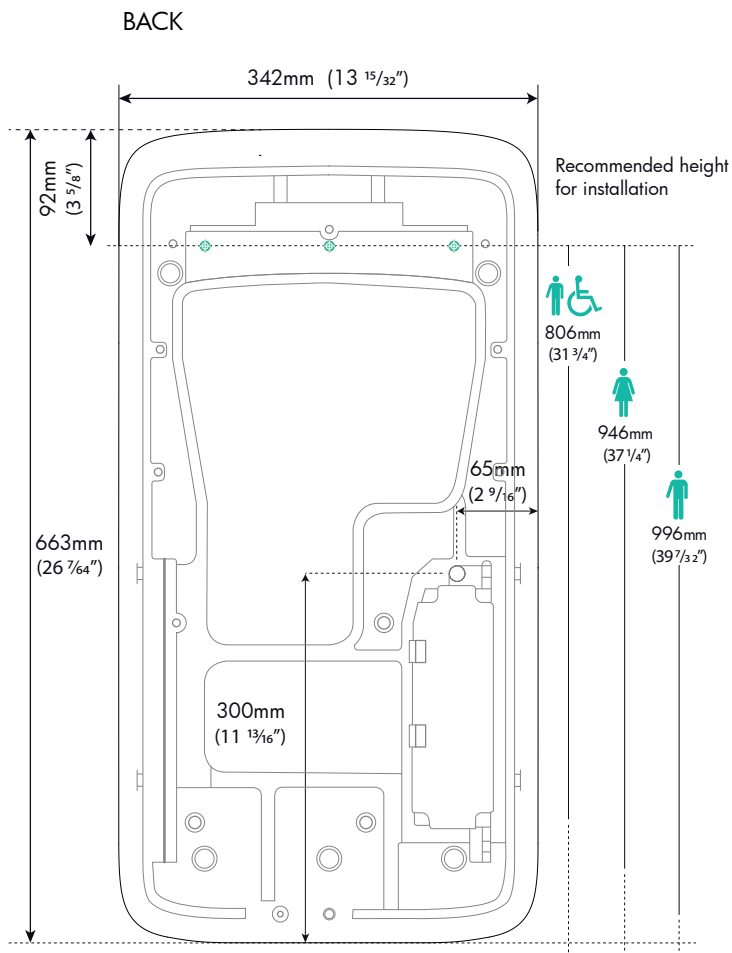
### Others

This unit has Bluetooth™ technology

### Standard warranty

5 years for parts and 1 year for labour (see conditions)

**NOTE:** ffuuss™ reserves the right to make changes without prior notice.



## Electric system

Input voltage	220 - 240 V	110 - 120 V
Frequency	50/60 Hz	50/60 Hz
Nominal power	1100 W	1000 W
Electric current	5A	9A
Type of motor	Universal	Universal
Motor speed	23000 RPM	21500 RPM
Working temperature	40 °C/104 °F	40 °C/104 °F

## Manufacturing

Cover material: ABS
Treated with Biomaster Silver Ions antibacterial additive
Finish: Various colours
Mounting mooring: Galvanized steel
Water inlet protection: IPX2
Filter: HEPA H13

## Operation

Automatic activation
Approx hand drying time: 12 seconds
Blocking time: 25 seconds
Airflow: Up to 73 l/s (19,3 gal/s)

## Logistics

Net weight: 7,9 Kg (16,4 lb)
Gross weight: 9,5 Kg (20,9 lb)
Box dimensions: 710mm / 390mm / 290mm (H27 61/64" W15 23/64" D11 27/64")

## Regulations

This device complies with the following directives/normatives:  
1999/5/CE 2004/108/CE 2006/95/CE  
2002/96/EC 2011/65/EC



## Others

This unit has Bluetooth technology

## Standard warranty

5 years for parts and 1 year for labour (see conditions)

**NOTE:** ffuuss™ reserves the right to make changes without prior notice.



# ffuuss™

Air hugs technology

For more information:



[www.ffuuss.com](http://www.ffuuss.com)

FOUNDING PARTNER



electric Handdryer  
Association

Hygienic - Environmentally Friendly - Efficient - Economical

**ffuuss™ 2013, S.L.U.**

T. +34 902 883 083

C-55, km 79

C/Ganiveters, 7. Pol. Ind. Amelllers

25280 Solsona (Spain)

[info@ffuuss.com](mailto:info@ffuuss.com)

**ffuuss™ Inc**

T +1 (305) 400 - 0622

1900 N. Bayshore Drive, 1A/1B

Miami, Florida 33132. USA

[sales-usa@ffuuss.com](mailto:sales-usa@ffuuss.com)